

Jonathan Kirschmeier

ASSOCIATE

Chicago

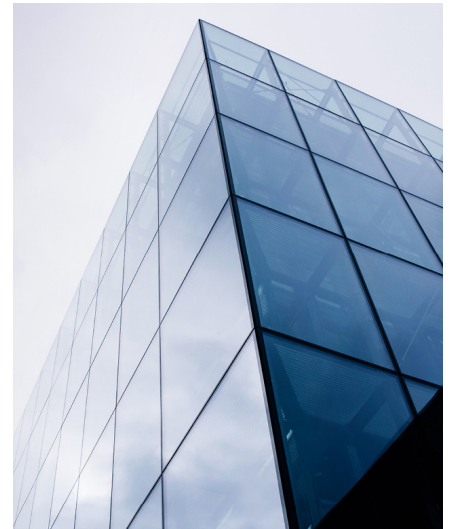
312.845.2712

jkirsch@chapman.com

Jon Kirschmeier is an associate in Chapman's Banking and Financial Services Department and a member of the Commercial Lending Group. Jon's practice focuses on representing banks, private lenders, and other financial institutions in lending transactions involving a wide variety of credit facilities.

Jon has experience structuring, documenting and negotiating both secured and unsecured credit facilities, as well as a variety of debt structures (including first lien/second lien, crossing lien, unitranche, and mezzanine structures).

Prior to joining Chapman, Jon worked as associate counsel at Alter Domus, a services provider for the alternative investment industry, where he represented Alter Domus in its capacities as administrative agent and collateral agent and advised on general internal business matters.



Admitted

Illinois

Education

The John Marshall Law School, J.D., 2017

Emory and Henry College, B.A., Political Science and Government/International Studies, 2013

Practice Focus

Agribusiness Lending

Asset-Based Lending

Banking and Financial Services

Commercial Lending

Commercial Lending and Real Estate

Health Care Finance

Health Care Lending

Loan Syndications and Trading/Syndicated Credits

Mezzanine Finance

Second Lien Financings

Senior Lending