

Olu "Ish" Ishmael

ASSOCIATE

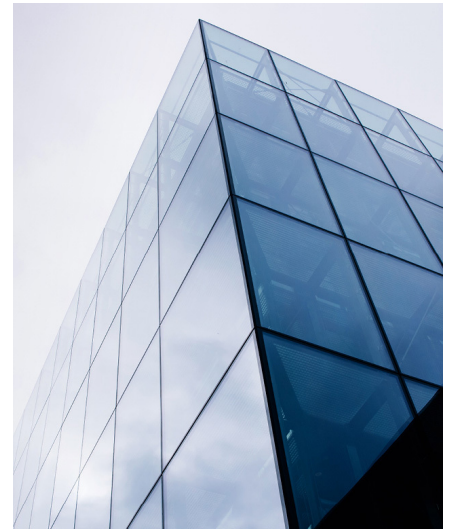
Chicago

312.845.3708

oishmael@chapman.com

Olu "Ish" Ishmael is an associate in Chapman's Banking and Financial Services Department and a member of the Commercial Lending Practice Group. Ish's practice focuses on representing banks, direct lenders, and other financial institutions in financing transactions, including negotiating, documenting, and structuring a wide range of credit facilities.

Prior to joining Chapman, Ish practiced law at DLA Piper LLP primarily advising on commercial real estate finance, private equity financings and refinancings, private equity fund formations, operations, structurings and restructurings, portfolio acquisitions and dispositions, joint ventures, United States federal tax matters, Real Estate Investment Trusts (REITs), and various equity investments.



Admitted

Illinois

Education

Northwestern University
Pritzker School of Law, J.D.,
2012

- Senior Editor, *Journal of International Law and Business*

Northwestern University
Pritzker School of Law, LL.M.,
Tax, 2012

Purdue University, B.A.,
Communication, 2004

Practice Focus

Banking and Financial
Services

Commercial Lending

Commercial Lending and Real
Estate

Lending to Private Equity
Firms

Real Estate Finance

Real Estate Investment Trusts
(REITs)

Senior Lending