

Stephanie An Glantz

SENIOR COUNSEL

San Francisco
415.278.9030
sglantz@chapman.com

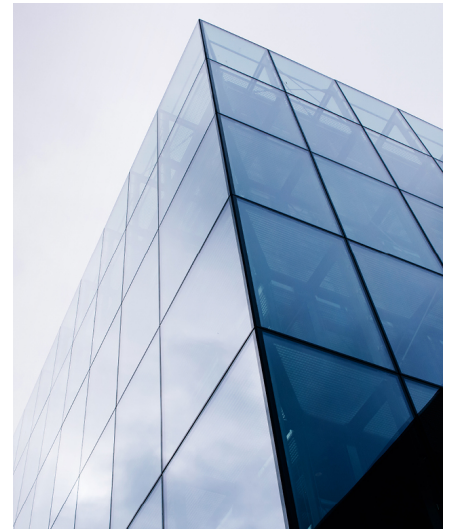
Stephanie An Glantz is a senior counsel and member of Chapman's Banking and Financial Services Department and Commercial Lending Group. Stephanie represents banks, alternative lenders, and other financial institutions in a variety of complex corporate transactions, including domestic and cross-border transactions, syndicated and bilateral lending, working capital facilities (cash-flow and asset-based), acquisition financings, subscription and capital call facilities, and distressed debt transactions, including strategic lending transactions and out-of-court restructurings.

Stephanie has industry experience in a variety of business sectors including software and technology, healthcare, retail, restaurants, transportation and logistics, and manufacturing. She has extensive experience drafting and negotiating credit and security documentation.

Prior to joining Chapman, Stephanie worked as in-house production counsel for The Walt Disney Company, and prior to that, she was an associate in the Los Angeles office of Paul Hastings LLP.

Languages

Korean



Admitted

California

Education

Cornell Law School, J.D., *cum laude*, 2014

Harvard University, M.A.,
Education, Human
Development & Psychology,
2010

University of California at
Berkeley, B.A., Psychology,
2008

Practice Focus

Banking and Financial
Services

Commercial Lending

Commercial Lending and Real
Estate